

# MRC Courier

COMMITTEE

Volume 26, Number 3

Winter 2014

## Bringing the H.C. Prange Nativity back to life



*The H.C. Prange Nativity in December 2014, following nearly 10 months of conservation treatment.*

This story begins back in 1939 in the windows of a downtown department store. That year, the H.C. Prange Company of Sheboygan, Wisconsin introduced a plaster nativity set as part of their holiday window dressing. For decades to come, the store's main window would feature the seventeen-piece set as part of a larger tradition of animated window displays for the Christmas season.

Fast forward to 2001. The H.C. Prange Company was no longer, having been sold to Younkers in 1993. The crèche had not been on display at the store for some time. The historical society was looking to incorporate part of the animated window tradition into their annual holiday exhibit and activities. All this led to the arrival of the nativity pieces at the Sheboygan County Historical Society, along with a number of pieces of window animation that had once been part of the displays at Prange's.

When I arrived at the Museum in 2006, I quickly learned that the window animation of Prange's and the nativity were integral parts of the holiday season for the community. We at the Museum were proud to continue the tradition and that first year, I carefully unpacked the nativity set and placed the pieces into a display. Unfortunately, I also learned that

*Before, during and after conservation work of the Shepherd, one of the more significantly damaged nativity pieces*



*(Continued on page 4)*

Voting membership in the Midwest Registrars Committee is open to those museum professionals who support the objectives of the MRC, who reside in the Midwest region (including Illinois, Indiana, Iowa, Michigan, Minnesota, Missouri, Ohio, and Wisconsin), and who hold positions such as registrar, collections manager, curator, volunteer, administrator, conservator, corporate registrar, or student.

A non-voting membership is available for individuals who are associated with for-profit organizations such as shipping companies, customs brokers, insurance firms, and other suppliers of materials and services, and individuals who reside outside of the Midwest region.

The membership period covers the calendar year (from January 1 through December 31). Annual dues are \$10.00 per year. For more information on the Midwest Registrars Committee or to join MRC, visit <http://www.midwestmuseums.org/mrc.html>.

## From the MRC Chair

Rachel Vargas

Happy New Year! This issue of the *Courier* is dedicated to the annual reports of the MRC Board and State Representatives. Everyone is pleased to report on the happenings of 2014, though we are quickly looking ahead to this summer and the annual meeting of the Association of Midwest Museums which will be held in Cincinnati, Ohio from July 19-22, 2015. At this time, the MRC is pulling together session proposals for the meetings. As Cincinnati is so centrally located in the Midwest, we're hoping that robust attendance by MRC members will bring together an interesting group for networking, problem solving and of course, socializing!

Our current Secretary, Karen (O'Brien) Dively, has recently accepted a job in Sacramento, California, so if anyone is interested in taking over her duties, please let me know. I'll need to appoint a replacement shortly.

The American Alliance of Museums (AAM) and the six regional museum associations have published a 2014 National Museum Salary Survey. If your museum participated in the survey you are entitled to a complimentary copy. There is further information on the survey on the AAM website.

As always, please contact me if you would like to become more involved with MRC. We'll be looking for Cincinnati-area planners for the annual meeting and please remember that the funds of the MRC are available to all for support of round table sessions or other events that you might want to plan that will further the aims and goals of Midwest registrars and collections managers.

## From the Editor

Tamara Lange

My note is short this month, since I hope everyone will enjoy the story (and more so, the pictures!) from one of my more recent "large" projects at the Sheboygan County Historical Museum. It was such a fascinating tale, from the long community history to the people who stepped forward to ensure it would continue as a public fixture for generations to come, I could not help but share. I guess it does not hurt that it has been one of the things on my mind a great deal for the last year or two.

It is no surprise that life at Midwest museums is alive and well. It seems that there is something new, exciting, innovative and engaging going on in every corner of our eight state region. But I know that what we see here is just a small taste of the wonders of the Midwest. The next call for museum news will come out in early April. Please be sure to share a tidbit or two with your state representative! You don't even have to wait until April... there is no pre-payment penalty for *MRC Courier* news!

2015 looks like it is shaping up to be a busy year. I hope that it finds my fellow MRC members to be healthy, prosperous and joyful, with plenty of acid free tissue paper, archival boxes, Ethafoam and Pigma pens to make your hearts sing!



My nephew, Andrew, and I visiting with the newest addition to the Holiday Memories exhibit at the Museum — Bruce the Spruce. Rudolph was playing the part of body guard, which occasionally Bruce needed.

## 2014 Travel Stipends

*Sponsored by the Chicago Conservation Center, Masterpiece International, Terry Dowd, Inc., Tru-View, US Art and the Midwest Registrars Committee, five lucky MRC members received travel stipends in support of their attendance at the 2014 Association of Midwest Museum Conference in St. Louis. This issue we feature the reflections of recipient Stacie Peterson.*

### Reflections on the Mighty Rescue Crew Event ■ Stacie Peterson

Thank you to Tru-View and MRC for sponsoring my scholarship to attend the 2014 Annual Conference in St. Louis. This was my first time attending the Association of Midwest Museums annual conference and it was a great opportunity to meet colleagues from across the region. Conferences are great way to network, bounce ideas off others in the field and to learn/refresh skills.

Every year at the Annual Conference, MRC members from across the region are able to come together and assist an institution with a special project. This year we assisted The Griot Museum of Black History with the creation of custom mounts for their collection of African American cap/head coverings. The Griot is a small museum dedicated to the history of Black Americans in the Midwest. With only one staff member, they were eager for the help.



*The Mighty Rescue Crew showcases their efforts to assist the Griot Museum of Black History with hat mounts.*

With assistance from Griot volunteers, MRC members began the day by evaluating the different hats and caps that were in need of mounts. The items were currently on exhibit, but were being deinstalled as part of the mount making process. Evaluation criteria included structural integrity, size and shape of the coverings. Crew members were divided into groups: some conducted measurements, others cut ethafoam supports, while others covered the ethafoam supports with polyester batting and unbleached muslin.

Some in the group were new to mount making, while others were veterans. Some of the head coverings presented unique challenges due to their shape and the materials with which they were constructed. The conversations that took place between all members of the Crew as they figured out the best way to construct the mounts for these challenging pieces were very interesting and educational. All institutions have needs for specialized mounts and the skills learned during this Mighty Rescue Crew event will be invaluable.



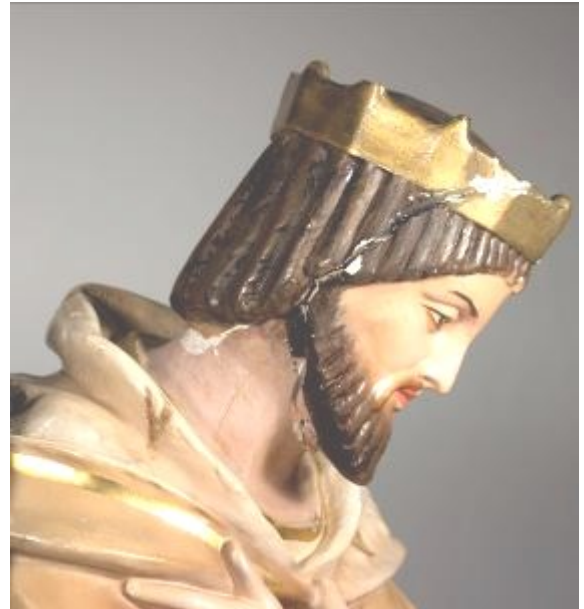
(Continued from page 1)

years of display had started to take a toll — all the pieces had chipping paint, several had significant chips or dings and, although stable, a few pieces had signs of significant structural issues. The storage crates had also seen better days. Though protective, many appeared to have water staining along the bottom—probably a throwback to the 1983 water main break and subsequent flood. Some of the crates needed new packing materials to support the pieces. And the increasing number of slivers the crates were providing on an annual basis just did not seem like it fit into the “other duties as assigned” category.

Each year, as I set up, and six weeks later, packed away, the nativity, I would make note of the condition of the pieces. Was the paint loss accelerating? Were there indications that the pieces with structural concerns were worsening? (One of the wise men would have been an excellent candidate for a character in the movie *Face Off*. Luckily an internal metal armature kept his face in place.) While we were able to do basic care for the pieces, the repairs needed were far beyond the abilities of a staff without an in-house conservator.

After our 2012 holiday exhibit, my eyes (and gut) told me several of the pieces were reaching a turning point. The lost paint was becoming a major distraction and it seemed that the pace of additional loss was accelerating. I was increasingly concerned about the structure of several of the pieces that had cracks, not just the wise man. After much discussion of what the possible options were and the implications for the future display of the pieces, the Museum engaged objects conservator Meghan Mackey to give us some options for conservation work.

When Meghan visited in the spring of 2013, even I was taken aback as we looked at the different pieces. The increased light in our work space was revealing. Of course, all were in need of cleaning beyond what we were comfortable doing at the Museum due to the paint condition. Many had previous paint touchups that were likely contributing to the current paint loss. Several previous repairs were beginning to show signs of compromise and the four pieces with the most significant damage were likely to become unexhibitable within a few years, if not worse.



*The crack on Wise Man #1's face distracted from the incredible workmanship of his features.*

Meghan provided several options for the Museum. At minimum, cleaning was recommended along with repair of the most significant structural damage. Additional repairs to chips or cracks that were stable was offered as an option. Reworking of previous repairs was not recommended, except in a couple cases. The crates would either need to be replaced or reworked to include drop fronts, new stabilizers and improved spacing. With the information in hand, the Museum set out to raise funds to have all the proposed work done, along with purchasing the supplies to build custom crating in house.

Beginning in January of 2014, every piece of the nativity went on a vacation to Madison. By November, all the pieces had been cleaned and had missing paint addressed. The five pieces with significant structural damage were repaired – the wise man had his face secured, the two other wise men had extensive peeling paint consolidated, the shepherd had his broken arm reset and Jesus had a finger reconstructed. The cracks or chipped plaster were filled, stabilized and blended to match the surrounding paint. At the same time, we undertook the construction of six new crates with the help of several volunteers.

The nativity was back on display by opening day of our holiday exhibit. The response was fantastic! Not only did the project provide an opportunity to ensure the nativity remains part of the community story for generations to come, it has also been a great educational experience for all involved, from opportunities to discuss the importance of artifact conservation to lively discussions about construction techniques.

# News from the Midwest

## Illinois ■ Laura McDowell Hopper

### **Anthropology Museum, Northern Illinois University, DeKalb**

The Anthropology Museum at NIU had a very exciting year in 2014! With invaluable assistance from NIU students, we were able to complete a National Endowment for the Humanities Preservation Assistance Grant project. The grant funded our Textile Rehousing and Environmental Monitoring project, which allowed our Museum to purchase supplies to rehouse 20% of our textile collection. During this process, Museum staff chose to use a Melinex cover for the textiles instead of muslin or tissue. Our hope is that this will better facilitate access for our faculty and students. The Museum was also able to purchase new dataloggers to more effectively monitor the temperature and humidity in our textile storage space.

Our Museum is thrilled to be a recipient of an Institute for Museum and Library Services Museums for America grant. In January 2015 we will begin partial collections move to make space for the installation of compact shelving. As an academic museum, we will be involving students in this process from start to finish. During the next academic year we will be training students to make custom storage mounts for objects as they are moved onto their new storage units.

The Anthropology Museum was also thrilled to receive the Illinois Association of Museum's Superior Achievement Award for its exhibit "Fragments: Haiti Four Years After the Earthquake." A community co-curated exhibit titled "Curated by DeKalb: 50 Years of the Anthropology Museum" which features over 200 objects from the collection opened in October.



*NIU students working on the Textile Rehousing and Environmental Monitoring project*

### **Downers Grove Park District Museum, Downers Grove**

The Downers Grove Park District Museum welcomed new staff members in 2014. Ashlee Grude was promoted from Collections Manager to Museum Supervisor, Sarah Stasukewicz became the new Curator, and Dominique Gulotta was brought on as Educator.

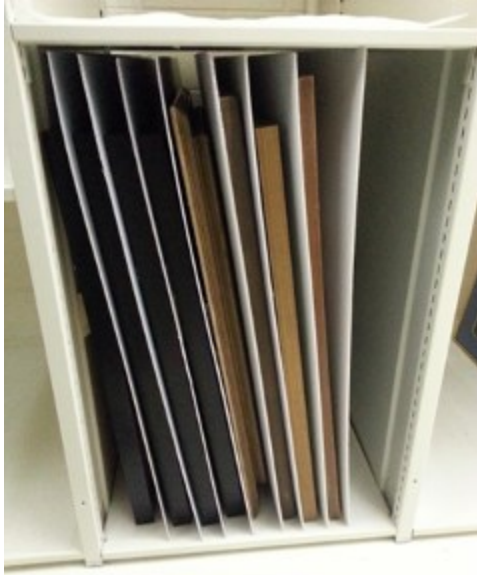
The Museum opened a new exhibit in July 2014 titled "Movie Magic: Celebrating 86 years of the Tivoli Theater" which recently won an Illinois Parks and Recreation Association Special Program Award. A previous exhibit, "Catalog Homes of Downers Grove," won an Award of Merit from the Illinois Association of Museums this fall.



*"Movie Magic" at the Downers Grove Park District Museum*

## DuSable Museum of African American History, Chicago

Last January, the DuSable Museum of African American History embarked on a major collections initiative that included the first full-scale, comprehensive inventory, as well as a longer-range plan to catalog, condition report, photograph, clean and re-house the entire collection. This is all part of a proposed three-year project, the first of which was funded through the Gaylord and Dorothy Donnelly Foundation's *Regionally Significant Collection Program*.



Officially at the one-third completion mark, this collections stewardship initiative is already having a tremendous impact. Most significantly, we have taken advantage of this expanded knowledge of the collection and are currently developing the new permanent exhibit *Freedom, Resistance and the Journey toward Equality*.

We are truly delighted to report that the Gaylord and Dorothy Donnelly Foundation has awarded the DuSable Museum its second year of funding for the continuation of this important, groundbreaking project. This year we will focus on cataloging/re-housing the textile collection and the objects on exhibit and complete the organization of the registration documentation.

*Cleaned and rehoused paintings at the DuSable Museum*

## The Spurlock Museum, University of Illinois at Urbana-Champaign, Urbana

This summer was incredibly productive for Spurlock Registration staff as we completed our first full artifact inventory since moving to our building in 2002. It took 2 years, 3 staffers, and the occasional assistance of a student or two, but over 50,000 objects were inventoried.

As an academic museum, we enjoy hosting undergraduate and graduate interns from across Illinois. This year we were fortunate to host two international student interns as well. Pauline Parent from the Ecole du Louvre and Jessie Bamford from the University of Birmingham's Ironbridge International Institute for Cultural Heritage worked with us to research collections in preparation for future exhibitions. The students were a pleasure to work with, and we look forward to future collaborations with these programs.



*The Spurlock Museum's collection staff bought new smocks this year! Collections wears blue and registration wears green.*



## Indiana ■ Lana Newhart-Kellen, State Rep

### Atterbury-Bakalar Air Museum, Columbus

The Atterbury-Bakalar Air Museum has reopened after expanding their facilities. Five thousand square feet were added to the current building, which includes not only increased exhibition space, but a meeting room and library.

### Brown County Historical Society, Nashville

Construction on a new 18,000 square foot history center is complete. Built by Dunlap Company with design by Kirkwood Studio, the new space has a large room for monthly meetings, museum, along with reading room, archive and conservation areas.

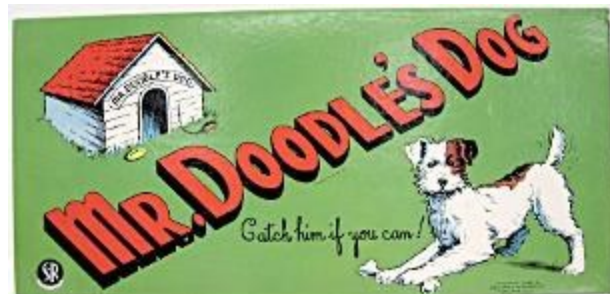
Though moved in, it will require a little time to be up and running. A grand opening is being planned for Spring 2015.



*An exterior view of the new addition to the Brown County Historical Society, along with an interior shot of the new meeting space.*

### Children's Museum of Indianapolis, Indianapolis

The Children's Museum of Indianapolis Collections department has launched a Tumblr blog where we are sharing behind-the-scenes images of artifacts, details about our work and images from the museum's historical archives. Please take a look and follow us on Tumblr at: <http://thechildrensmuseum.tumblr.com/>.



*Some of the first artifacts highlighted on the new Tumblr page for the Collection Department at the Children's Museum of Indianapolis.*

## Michigan ■ Roberta Frey Gilboe, State Rep

### University of Michigan Collections Committee, University of Michigan, Ann Arbor

Looking back on last year's activity across the state, the University of Michigan Collections Committee, which represents the collections across the University of Michigan campus, found opportunities to visit other institutions in the state. In July, Sebastián E. Encina, the Collections Manager for the Kelsey Museum of Archaeology, organized a visit to the GM Heritage Center Archives. There are 150 vintage GM cars on display from a collection of 450, as well as the archives of GM history. In August, the University of Michigan Collections Committee met at the Broad Art Museum in East Lansing and was given a behind-the-scenes tour of the new building that opened in November 2012. Rachel Vargas, the Broad Art Museum Registrar, discussed all the opportunities that the new facility has provided to the staff. The beautiful galleries feature stunning windows and angled walls that create a space that is magical, but also offers challenges for installing artwork. She and her staff have come up with innovative and creative installation solutions.

### Cranbrook Art Museum, Bloomfield Hills

Cranbrook Art Museum, which opened its renovated galleries and expanded storage and educational spaces in 2011, continues to find opportunities to bring visitors into the storage spaces to view collections not normally available in the galleries. Allowing visitors in storage was not an easy transition for the Registrar to make, but after setting up careful guidelines for managing the security of the space and the number of staff who needed to be present, it proved to be an energizing experience to see the excitement of patrons and school groups who were provided an opportunity to see how an art museum managed its collections and get a behind-the-scenes view that is not usually available to museum visitors. Further along in the upcoming year, look for the exhibition, *Nick Cave: Here Hear*, on display from June 20 through October 11, 2015. Nick Cave, a graduate of Cranbrook Academy of Art, is famed for his embellished costumes called "Soundsuits" that are staged in public performances. The artist conceives some as fragile sculptural totems, and others as wearable costumes designed for sound, mobility, and dance. Though influenced by a vibrant palette of African art, armor, found objects, fashion, and textile design, the origin of the Soundsuit is rooted in social critique. Cave first created a suit in the aftermath of the Rodney King beating in 1991, envisioning an emotional shield that protected one's race or gender while still expressing individuality.

### Kalamazoo Institute of Arts, Kalamazoo

In the near future, visit the Kalamazoo Institute of Arts for the exhibition, *Redefining the Multiple*, from January 17 through April 26, 2015. This exhibition features the work of Japanese printmakers working with and beyond the conventional materials of their form. There are three-dimensional objects and installations, paintings made with printmaking tools and techniques, digital photography and technology. Although each of the participating artists' personal work has transitioned over the years, the production of multiples remains at the core of their creative process.

### Museum of Cultural and Natural History, Central Michigan University, Mount Pleasant

The Museum of Cultural and Natural History (MCNH) at Central Michigan University (CMU) will be dismantling its "Journey Through The Jungle" exhibit and installing a new exhibit based upon the work being done by the Institute for Great Lakes Research at CMU. The exhibit is expected to open in March 2015. Also, MCNH's Museum Studies Program has partnered with other CMU academic departments to create a new multi-disciplinary Masters in Cultural Resource Management program, which was launched this past Fall semester



with 12 students enrolled thus far.



Finally, one of the more interesting artifacts acquired this year at MCNH was a circa 1940s CMU outdoor concrete cigarette urn used here on campus until 2014. Smoking was banned across all of CMU campus this past July and, therefore, all of the outdoor ash urns were removed. The museum was fortunate enough to obtain one of the last remaining examples as the others had been taken to a concrete recycling plant.

*Ash urn being delivered by the CMU Grounds Crew.*

*The urn on its new permanent cart for storage.*



## Michigan Museums Association

Note that the 2015 Michigan Museums Association Conference will be in Ann Arbor, Michigan between September 30 and October 2. Workshops will include: the ABC's of Collections, Visitor Experience, and special topics. There are still opportunities to participate in developing a workshop topic.

## Missouri ■ Stacie Peterson, State Rep

### National Churchill Museum, Fulton

The Central Missouri Postal Customer Council and the Postmaster of the U.S. Post Office in Fulton unveiled the new Medal of Honor stamp in September at the National Churchill Museum.



### National World War I Museum, Kansas City

The National World War I Museum set a new attendance record in 2014 with 172,148 paid guests.

United States President Barack Obama signed legislation passed by both houses of Congress on December 19 providing the National World War I Museum at Liberty Memorial with its second official recognition from Congress. The bill effectively designates the Museum as the National World War I Museum and Memorial.

The National World War I Museum, which houses the most diverse collection of World War I objects in the world, earned a No. 23 ranking from TripAdvisor among the more than 35,000 museums in the U.S. The Museum was one of only eight recognized on the top 25 list from the Midwest and the only museum from Missouri to receive the distinction as part of its 2014 Traveler's Choice Awards.

**Do you have exhibitions, events, acquisitions, or other news to share?**

Please let your State Representative or Tamara know! See the listing of MRC Board Members and State Representatives for contact information

## Wisconsin ■ Elizabeth Froneza, State Rep

### Racine Art Museum, Racine

Racine Art Museum (RAM) is pleased to present what was once called "the most beautifully decorated tree in Racine." The tree includes ornaments from a variety of time periods and subjects—all from the late gallerist and arts supporter, Emile H. Mathis II's collection. Currently installed in RAM's main floor lobby, the 11-foot artificial tree will be lighted beginning on Friday, November 28, 2014 and will be on display through January 4, 2015 during regular museum hours.

In addition to establishing The Emile H. Mathis II Fund for Children's Education when he died in 2012, Mathis gave the museum his treasured tree and a cache of handcrafted blown glass ornaments. Mathis spent years collecting ornaments for the tree that he decorated each year for a display in his gallery on Main Street. This tree became a part of the annual Christmas celebrations that took place in Racine's downtown each year. In addition to avidly collecting ornaments (at one point, he had over 3,000), Mathis sold them in his gallery. While his tree at the Gallery contained both antique and contemporary decorations, his gift to RAM concentrates on ornaments from the 1940s and 1950s through recent years, and tracks many of the trends in holiday decorations over these decades.



## RENEW NOW FOR 2015!!

It is that time of year again ... time to renew your MRC Membership!

1. Fill out the Electronic Membership form. It is available from your State Representative or at the Midwest Registrars Committee [website](#). Simply fill out the fields in the PDF file and save the document. E-mail the completed form to Jennifer Noffze, MRC Treasurer, at: [jenn@childrensmuseum.org](mailto:jenn@childrensmuseum.org)
2. Pay your dues online with PayPal (if you do not have an account, it is free to sign up and takes only minutes). From PayPal's home page, click on "Send Money" and type [jenn@childrensmuseum.org](mailto:jenn@childrensmuseum.org) in the recipient field. You can pay from a bank account or credit card and you will receive a receipt when the payment is processed.

If you prefer mailing a check and completing a form by hand, you can still print the form (available at the end of the newsletter), make a check payable to MRC and mail it to the address noted on the membership form. If you have any questions, please feel free to contact MRC Treasurer Jennifer Noffze ([jenn@childrensmuseum.org](mailto:jenn@childrensmuseum.org)).



# Midwest Registrars Committee

## CHAIR

Rachel Vargas, Registrar  
Broad Art Museum  
Michigan State University  
East Lansing, Michigan 48824  
517-884-0651, [vargasr@msu.edu](mailto:vargasr@msu.edu)

## VICE-CHAIR & TRAVEL STIPENDS

Ms. Devon Pyle-Vowles, Collections Manager  
314 Hawthorn, B  
Glencoe, Illinois 60022  
847-242-0495 or 847-903-7940  
[dpvowles@comcast.net](mailto:dpvowles@comcast.net)

## SECRETARY

Karen Dively, Collection Manager  
University of Michigan Museum of Anthropology  
1109 Geddes Avenue  
Ann Arbor, Michigan 48109  
734-764-6299, [klobrien@umich.edu](mailto:klobrien@umich.edu)

## TREASURER

Jennifer Noffze, Registrar/ Archivist  
The Children's Museum of Indianapolis  
PO Box 3000  
Indianapolis, Indiana 46206  
317-334-3722, [jenn@childrensmuseum.org](mailto:jenn@childrensmuseum.org)

## ARCHIVES

Lauren Hancock  
[lhancock1030@yahoo.com](mailto:lhancock1030@yahoo.com)

## DEVELOPMENT

Terry Segal, Associate Registrar  
Detroit Institute of Arts  
5200 Woodward Avenue  
Detroit, Michigan 48202  
313-833-7907, [tsegal@dia.org](mailto:tsegal@dia.org)

## NOMINATIONS

Cristin Waterbury, Curator  
National Mississippi River Museum & Aquarium  
350 East Third Street  
Dubuque, Iowa 52001  
563-557-9545, [cwaterbury@rivermuseum.com](mailto:cwaterbury@rivermuseum.com)

## NEWSLETTER

Tamara R. Lange, Collection Coordinator/Registrar  
Sheboygan County Historical Society & Museum  
3110 Erie Avenue  
Sheboygan, Wisconsin 53081  
920-458-1103, [tamara.lange@sheboygancounty.com](mailto:tamara.lange@sheboygancounty.com)

## WEBSITE

Craig Hadley, Curator  
DePauw University  
10 W. Hanna  
Greencastle, Indiana 46135  
765-658-6556, [craighadley@depauw.edu](mailto:craighadley@depauw.edu)

## ILLINOIS

Laura McDowell-Hopper, Curator  
The Anthropology Museum, Northern Illinois University  
DeKalb, Illinois 60115  
248-462-3181, [laura.mcdowell.hopper@gmail.com](mailto:laura.mcdowell.hopper@gmail.com)

## INDIANA

Lana Newhart-Kellen, Registrar  
Conner Prairie  
13400 Allisonville Road  
Fishers, Indiana 46038-4499  
317-776-6000, [newhart@connerprairie.org](mailto:newhart@connerprairie.org)

## IOWA

Teri Van Dorston, Assistant Director  
Veterans Memorial Commission  
50 2nd Avenue Bridge  
Cedar Rapids, Iowa 52401  
319-286-5038, [T.VanDorston@cedar-rapids.org](mailto:T.VanDorston@cedar-rapids.org)

## MICHIGAN

Roberta Frey Gilboe, Chief Registrar  
University of Michigan Museum of Art  
525 South State Street  
Ann Arbor, Michigan 48109-1354  
734-764-1178, [rgilboe@umich.edu](mailto:rgilboe@umich.edu)

## MINNESOTA

Jackie Hoff, Director, Collection Services  
Science Museum of Minnesota  
120 West Kellogg Blvd.  
St. Paul, Minnesota 55102  
651-221-9435, [jhoff@smm.org](mailto:jhoff@smm.org)

## MISSOURI

Stacie Petersen, Registrar  
National World War I Museum at Liberty Memorial  
100 W 26th Street  
Kansas City, Missouri 64108  
816-888-8119, [Stacie.Petersen@theworldwar.org](mailto:Stacie.Petersen@theworldwar.org)

## OHIO

Robin Goodman, Collections Manager and Registrar  
Graham Gund Gallery  
Kenyon College  
101 1/2 College Drive  
Gambier, Ohio 43022  
740-427-5969, [goodmanr@kenyon.edu](mailto:goodmanr@kenyon.edu)

## WISCONSIN

Elizabeth Frozena, Registrar  
Racine Art Museum  
441 Main Street  
Racine, WI 53401-0187  
262-638-8300, x113, [efrozena@ramart.org](mailto:efrozena@ramart.org)



# 2014 ANNUAL REPORT

## of the

### MIDWEST REGISTRARS COMMITTEE

## Annual Report of the MRC Chair ◇ Rachel Vargas

The Midwest Registrars Committee: *Rachel Vargas*, Chair; *Devon Pyle-Vowles*, Vice-Chair and Travel Stipends; *Craig Hadley* stepped down from the Secretary position and is now the MRC Webmaster; *Karen Dively*, Secretary; *Jennifer Noffze*, Treasurer; *Lauren Hancock*, Archives; *Terry Segal*, Development; *Cristin Waterbury*, Nominations; *Tamara Lange*, Newsletter.

Our state representatives are: *Laura McDowell Hopper*, Illinois; *Lana Newhart-Kellen*, Indiana; *Teri Van Dorston*, Iowa; *Roberta Gilboe*, Michigan; *Jackie Hoff*, Minnesota; *Stacie Petersen*, Missouri; *Robin Goodman*, Ohio; *Elizabeth Frozena*, Wisconsin.

The MRC had their 2014 annual meeting during the Association of Midwest Meetings held in St. Louis, MO from July 14-17. One of the keynote speakers was Annmarie Erickson, COO of the Detroit Institute of Arts, who spoke on the challenges the DIA was facing as the city of Detroit made its way through bankruptcy. As I'm sure most have heard, there was a proposal to liquidate some of the art assets from the museum that were purchased by the City of Detroit in order to pay city creditors. Thankfully, as I write this note, the issue has been resolved without the museum losing any of their collections. Risk Management was also an overall theme through the meetings. Our annual meeting lunch was sponsored by Huntington T. Block and the MRC evening social event was sponsored by Willis Fine Art, Jewelry & Specie.

Cristin Waterbury saw us through our Board elections in the spring of 2014, with the new Board members taking up their positions in July.

The Mighty Rescue Crew, organized by our Missouri representative, Stacie Petersen, worked on constructing storage mounts for African-American Caps and Head Coverings at the Griot Museum of Black History in St. Louis, MO.

In 2014, MRC had five travel stipend awards to support member attendance at the 2014 AMM Conference in St. Louis coordinated by our development chair, Terry Segal. Full stipends were generously sponsored by Terry Dowd, Inc.; The Conservation Center, Chicago, U.S. Art Company and half stipends were sponsored by Masterpiece International and Tru-View, with MRC funds completing the stipends.

The MRC account balance remains steady, as detailed in the Treasurer's report. Income was raised through membership dues and donations; gifts for travel stipends; and newsletter sponsorships. Expenses were travel stipends; grants to state registrar organizations for events; MRC annual meeting expenses at AMM.

Membership in the MRC remains a small, but dedicated group. We're hoping this year to increase membership by encouraging the state representatives to hold two round-table sessions in their states during 2015.

Three issues of the *Courier* were edited and published by Tamara Lange for the MRC and distributed to members. Our newsletter contains special articles, information from the board along with notes from the state representatives.

Craig Hadley has transitioned from MRC Secretary to our Webmaster and put together a wonderful website last summer. On the website you will find past issues of The Courier, information regarding Contact infor-

mation for the Board and State Representatives, a link to our Facebook page and under the Membership tab you'll find a Directory of current members and information regarding grants and travel stipends for the 2015 meeting. Be sure to bookmark the new site at <http://midwestregistrars.org/>

Thank you for your continued support of the Midwest Registrars Committee.

## Annual Report of the Vice Chair ◇ Devon Pyle-Vowles

Five lucky MRC members received travel stipends in support of their attendance at the 2014 Association of Midwest Museums Conference in St. Louis. The stipends were sponsored by the Chicago Conservation Center, Masterpiece International, Terry Dowd, Inc., Tru-View, US Art and the Midwest Registrars Committee.

Karen Dively = Masterpiece International and MRC

Aaron Graham = US Art

Stacie Petersen = Tru-View and MRC

Ashleigh Herrera = Terry Dowd, Inc.

Laura McDowell-Hopper = Chicago Conservation Center

## Annual Report of the Treasurer ◇ Jennifer Nofze

Beginning Balance As of 12/27/2013		\$6,963.49
<b>INCOME</b>		
	Membership Dues/ Donations	\$838.89
	Gifts for Travel Stipends	\$3135.00
	AMM 2013 Conference Sponsored Events	\$750.00
	Newsletter Sponsorships	\$500.00
	Total Income Deposited	\$5,223.89
<b>EXPENSES</b>		
	MRC Chair Expenses	\$841.02
	State Grants	\$250.00
	Travel Stipends	\$3,750.00
	MRC Annual Meeting at AMM 2013	\$1,560.83
	Website Fee	\$56.00
	Total Expenses	\$6457.85
Bank Balance in Indianapolis, IN, as of 12/19/2014		\$5,729.53

*Funds held by Indiana Members Credit Union*

# Annual Report of the Nominations Chair ◇

Cristin Waterbury

Thank you for the opportunity to serve as MRC Nominations Chair once again for the 2014 elections. We had a truly outstanding slate of candidates this year and I am pleased to report that our voter turnout was over 60%!

The official results, as tabulated by Survey Monkey, are as follows:

*Chair:*

Rachel Vargas, 45 votes (96%)

2 voters abstained

*Vice Chair:*

Devon Pyle-Vowles 29 votes (60%)

Anna Cannizzo 18 votes (38%)

1 voter abstained

*Secretary:*

Karen Dively 31 votes (67%)

Ashleigh Herrera 14 votes (30%)

1 voter abstained

*Treasurer:*

Jennifer Noftze 28 votes (61%)

Tiffany Charles 18 votes (39%)

0 voters abstained

Thank you again to all the candidates and to all the MRC members who exercised their right to vote.

Congratulations to Rachel, Devon, Karen, and Jennifer, and we wish you a great 2014-2016 term of office!

---

# Annual Report of the *MRC Courier* Editor ◇

Tamara Lange

The *MRC Courier* made two major changes in 2014. The first was moving to a publication schedule that would support three issues per year — late spring, late summer/early fall, and winter. This change was in part a response to the desire to include more State news content without overwhelming both State Representatives and members. Additionally, it provides a better period of time after the AMM Annual Conference to gather information, photos and reflections from the conference.

The other major change introduced was a new layout that took into account the shift in recent years to an electronic publication that is primarily read on the computer by most recipients. Additionally, the logo and general color scheme were brought into sync with the organizations other publications and printed materials.

Many thanks to those that have provided content, both articles and state news bits!



# Annual Reports of the States ◇

## Illinois ■ Laura McDowell Hopper

2014 was an exciting year for museums throughout Illinois. Among the biggest news out of Illinois this year was the announcement of Chicago as the future home of the Lucas Museum of Narrative Art. Eleven museums in the state were awarded IMLS Museums for America grants, including collections stewardship grants for six museums. NEH Preservation Assistance Grants were also awarded to five institutions in Illinois. The Illinois Association of Museums hosted its annual conference in Rockford in October.

Two Illinois MRC members, Devon Pyle-Vowels and Laura McDowell Hopper, began creating a website dedicated to marking museum objects which they hope will go live in 2015. To participate in the website, please take this marking survey: <https://www.surveymonkey.com/s/TPBB82Z>. We hope this will be a great resource for MRC.

## Michigan ■ Roberta Frey Gilboe, State Rep

At the end of 2014, there were 19 members from Michigan participating in MRC.

Robin Goodman, formerly of the Kalamazoo Institute of Arts, transitioned from being the Michigan State Representative to the Ohio State Representative when she took a new position as the Collections Manager and Registrar for the Gund Gallery at Kenyon College.

## Missouri ■ Stacie Peterson, State Rep

It has been a quiet year for Missouri MRC'ers. Membership has increased with many members attending the annual conference this past summer in St. Louis. For 2015, we hope to continue to grow membership .

## Ohio ■ Robin Goodman, State Rep

We've had a quiet year here in Ohio, but I have big plans in 2015 to add membership by nurturing old connections and making new ones. I am also hoping to have the opportunity to come together at a collection round table so that we can discuss issues that are specific to registrars and to Ohio.



The Midwest Registrars Committee formed in 1978 to provide a forum for the exchange of information and methods among museum collections professionals and registrars in the Midwest region. The MRC fulfills this objective by promoting an atmosphere of mutual aid and cooperation and by promoting professional practices to benefit colleagues, the museum community, and members.

The MRC is affiliated with the Registrars Committee of the American Alliance of Museums (RC-AAM) and the Association of Midwest Museums (AMM).

### Who can join?

Voting membership in the Midwest Registrars Committee is open to those museum personnel who support the objectives of the MRC and who reside in the Midwest region, including:

- Illinois
- Indiana
- Iowa
- Michigan
- Minnesota
- Missouri
- Ohio
- Wisconsin

You don't have to be a registrar! Collections managers, curators, volunteers, administrators, conservators, corporate registrars, students, or other collections care professionals are encouraged to join.

A non-voting membership is available for individuals who are associated with for-profit organizations such as shipping companies, customs brokers, insurance firms, and other suppliers of materials and services, and individuals who reside outside of the Midwest region.

### Benefits of membership

- The Courier, MRC's quarterly newsletter
- Funding assistance for state workshops
- Professional network
- Workshops
- Travel stipends to attend annual AMM Conference
- Membership directory

### Membership fees

- Annual dues are \$10.00 per year
- The membership period covers the calendar year (January 1 - December 31)
- Make checks payable to:  
Midwest Registrars Committee

### Membership form (can type and save text)

Date: \_\_\_\_\_  
 Name: \_\_\_\_\_  
 Position: \_\_\_\_\_  
 Institution: \_\_\_\_\_  
 Address: \_\_\_\_\_  
 City/State/Zip: \_\_\_\_\_  
 Phone/fax: \_\_\_\_\_  
 Email: \_\_\_\_\_

New (voting \$10)

Renewal (voting \$10)

New (non-voting \$10)

Renewal (non-voting \$10)

### Make a difference!

Your active participation ensures the ongoing success of the MRC programs and activities. Please check the areas in which you would like to get involved:

State representative

Newsletter

Programs/annual meeting

Fundraising

Membership

### NEW FOR 2013—Renew and pay online!

Follow these two steps to renew your membership electronically:

1. Simply fill out this PDF form and e-mail it to [jenn@childrensmuseum.org](mailto:jenn@childrensmuseum.org)
2. To pay for your MRC dues via PayPal, login to your account, click "Send Money", and send your dues to: [jenn@childrensmuseum.org](mailto:jenn@childrensmuseum.org)

### -OR-

Send paper application and payment to:

Jennifer Noffze

MRC Treasurer

The Children's Museum of Indianapolis

P.O. Box 3000

Indianapolis, IN 46206