

# MRC *Courier*

## The Newsletter of the Midwest Registrars Committee

VOLUME 25, ISSUE 1

Spring 2013

# AN UNUSUAL COLLECTION

## A visit to the Wayne State University School of Mortuary Science



Overview of the Mortuary Science room at Wayne State University

▪ *Submitted by Terry Segal, Associate Registrar, Detroit Institute of Arts* ▪

Like most large museums, the Detroit Institute of Arts (DIA) often receives calls from smaller institutions looking for advice or expertise with their collection issues. One day an email titled "Mortuary Science Museum" popped up in my inbox. Intriguing, to say the least! A student from the School of Mortuary Science at Wayne State University was seeking our help with their collection of funerary material. The school is located just a few doors up the block from the DIA and the Detroit Historical Museum. Brimming with curiosity and not quite sure what we would find, we headed over for a visit.

The Wayne State Mortuary Science program was founded in 1939 and was one of the first programs in

the country. In 1991, the program director initiated the idea of collecting funerary items that could be used to depict the history of the profession. A call for donations went out to students, faculty and alumni. When the school first started, most funeral homes were a family business passed down from generation to generation, and the majority of students in the program were "legacies," so it was only natural to ask them to see what they could find in their grandparents' basements and attics. As a result, hundreds of objects were donated.

*(Continued on page 4)*

WSU Mortuary Science museum room during our visit as we discussed the collection issues. L to R: WSU faculty member Sharon Gee, DIA staff Terry Segal, Marisa Szyptman and Barbara Heller, and Mortuary Science students Alyse Bollheimer and Jill Askin.



The *MRC Courier*, published quarterly, is the Newsletter of the Midwest Registrars Committee.

Members and Vendors, please submit news, articles, announcements, photographs, and ideas for future issues to Tamara Lange, Collection Coordinator/ Registrar, Sheboygan County Historical Society and Museum. Phone: 920-458-1103 or Email: [tamara.lange@sheboygancounty.com](mailto:tamara.lange@sheboygancounty.com)

# FROM THE CHAIR

▪ *Submitted by Rachel Vargas* ▪

I have spent my career as a registrar working in university art museums, so spring to me always brings the quickening pulse of school being almost “over” for the year. Our exhibitions go up in May and then it is summer break and I can turn to every project that I have spent nine months telling everyone “when I have a bit of time, I am going to ....work on the inventory; organize the supplies; label all the new so-lander boxes.” If you are working on something challenging and need some advice, please remember that the MRC has a Facebook Group page (MRC (Midwest Registrars Committee)), which is great forum to share ideas, solicit assistance or just submit a post congratulating yourself on finishing a huge project (with pictures!!).

## Annual Meeting

This summer, please think about joining your fellow Midwesterners at the Association of Midwest Museum meetings from July 14-17, hosted by a fabulous university town and capital of the state, Madison, Wisconsin. Believe me, by the second day there, you will find yourself thinking that maybe it *would* be fun to buy one of those cheese hats or a sweatshirt with the UW Badger mascot! The state capital is down the street from the University of Wisconsin, everything surrounded by beautiful lakes and world-class restaurants! In these days of tightened budgets, the Midwest meetings tend to be less expensive than the national meetings and it's a great place to meet and network with other museum staff from your state and region. The preliminary program and information sheets are available at [www.midwestmuseums.org](http://www.midwestmuseums.org).

## Sessions

There are several collections sessions addressing such issues as cataloging nomenclature, using state and federal guidelines to benefit your collection, collections management systems review, today's issues with disaster response plans, shared collection databases, and collections metadata. As many collections staff wear more than one hat, the conference is also full of education, management and technology sessions.

## Networking and Social Events

The MRC will host two events at the conference on Tuesday, July 16<sup>th</sup> – the MRC Annual Luncheon Meeting at Johnny Delmonico's and in the evening we are planning a late-night happy hour. I have heard there will be drawings for fabulous prizes!

## Scholarships

As budgets are always on everyone's mind, please remember that the MRC is offering multiple travel stipends for members to attend the meeting, each for \$750.00; applications are due May 3rd. Our board member [Devon Pyle-Vowles](#) is your MRC contact for these scholarships. The AMM also awards a limited number of scholarships to cover the basic registration fees. Information on both scholarships is available in the AMM programming guide, and there is more information on the MRC website—

[www.midwestmuseums.org/mrc.html](http://www.midwestmuseums.org/mrc.html).

## Mighty Rescue Crew

We are organizing another Mighty Rescue Crew session if you can stay an extra day at the conference (Wednesday, July 17<sup>th</sup>). This is a great way to give back, learn new skills and pass along your knowledge to others.

## Getting Involved

Whether or not you are able to attend the annual meeting in July, please let me know if you are interested in being more involved with the MRC. Ann Sinfield, our former Chair, has been working very hard this year as a member of the AMM Program Committee, organizing events and programs for the summer meeting. She also has been the *Development Officer* on the board for several years, but she is thinking that after the summer meetings it would be a good time to turn this position over to someone else – to someone out there who would like to be more involved with the MRC! Feel free to contact me at 517-884-0651 or [vargasr@msu.edu](mailto:vargasr@msu.edu).

(Continued on page 3)



# FROM THE EDITOR

▪ *Submitted by Tamara Lange* ▪

It seems difficult to believe that it is already time for the Spring issue of the *MRC Courier*! Of course, that might be in part because spring forgot to arrive here in Wisconsin until mid-April. I know many of us across the Midwest have been plagued by strange weather these last few months — late snowstorms, crazy rain, etc. At least we are in good company, right?

For me, spring always brings the excitement of a new seasonal exhibit. In addition to my registrar and collection manager duties, I am also responsible for our annual seasonal exhibit (along with maintenance of exhibits, redesign of exhibits, etc.). Somewhere along the way, we chose the topic of beverages made over the decades in Sheboygan County. It seems that if you can drink it, there was a point in time where it was produced in Sheboygan County.

As interesting as working on the exhibit has been, there always comes a point where my brain wanders a little as I am installing and shaping the final product. For some reason, this year I kept coming up with my very own take on those “Lessons from a —” lists. So I bring you my very own “Lessons from an Exhibit



(Continued from page 2)

## Other Conferences

The annual AAM meetings is soon; May 19–22 in Baltimore. The Association of Registrars and Collections Specialists (ARCS) Inaugural Conference will be held from October 31–November 3 in Chicago. Check out both websites for further information

Installation: Beverage Edition.” I will even throw in a few visual aids.

1 *Size does NOT matter.* Bottles might be small, but they have some fascinating stories to tell!

2 *Semantics DO matter.* The debate of soda-pop-coke and bubbler-water fountain-drinking fountain was raging well before we even started installing the exhibit.

3 *It is all in the eye of the beholder.* It seemed so obvious that our large copper vat was part of a whiskey still until one of the kids from a school program exclaimed “Look at that awesome frosting machine!”



4 *Maybe labels can be optional.* Sometimes the stories visitors tell are far more interesting than any label I could ever write.

5 *Someday you will wish you could go back.* Several years ago, I convinced the other staff that we could remove a bubbler (now you know what camp I fall in) from the gallery wall. It was always in the way, the threat of water in the exhibit scared me, and there were plenty of others available for guests. We reinstalled it about 6 inches from where it had been for this exhibit. At least the threat of water is not an issue this time—we chose not to run the water line over.

6 *Water water everywhere and not a drop to drink.* See point 5.

There were more, but I will spare everyone. Have a drink and enjoy perusing this issue of the *Courier*.

## Membership

Craig Hadley has been working on our membership. As of January 2013 we had 122 members and we are hoping to increase these numbers. Our Facebook page has 67 members.



(Continued from page 1)

The embalming practices that we take for granted today got their start during the Civil War, when army surgeons were looking for a way to preserve the bod-



Close up of a display case containing embalming tools

ies of Union soldiers who died in battles in the south, so that their bodies could be returned home by train for funeral and burial in the north. The collection includes a large number of the surgical tools that were used to prepare the bodies for embalming in those early days. Jill Askin, a student in the program and self-designated “head curator” of the collection, said she was surprised to discover that the tools they use today have not really changed. Some more recent artifacts are memorabilia associated with the funeral of Rosa Parks, since the preparation of her body was handled by Roger Husband, an embalming professor at the school.

Jill and a couple of other students began a project to document and photograph the collection, but after

working their way through the first dozen or so objects, they decided to stop and seek professional advice. We spent a couple of hours with them on site viewing the collection and discussing their concerns and goals. We helped them outline the basic steps needed to organize the collection, from devising an accession number system to developing a simple collections database, and also discussed issues such as proper preservation and display.

The objects date from the late 1800s through the early 21<sup>st</sup> century. Some of the oldest artifacts include coffins and tables that were used to lay out the deceased for viewing at home in the family parlor, hence leading to the later term “funeral parlor.” Prior to the widespread use of embalming, coffins contained a space for ice to keep the body preserved as long pos-



Child's coffin. A “coffin” refers specifically to one with this shape, wider at the shoulders, narrow at the head and feet. A “casket” is rectangular.

sible for viewing and burial generally took place within 24 to 36 hours. A child's coffin from this time period has a window for viewing the face while the coffin remained closed. The collection also includes early embalming kits in cases that were used by undertakers who originally went out to the home to embalm the bodies.

It struck me during our visit that the fledgling museum presents a microcosm of all the issues we face in our own institutions. The objects were not tagged or documented when they first arrived, which led to many “mystery objects” that now lack donor and other basic cataloging information. Since there was no formal collections policy, many duplicate objects were accepted. This included multiple identical embalming machines, memorial lights, embalming



Embalming fluids on display

chemicals and autopsy tools. In addition, the collection suffers from a lack of space, funding and resources. The collection is housed in one small room. The school has no alternate storage space, so the room doubles as both gallery and storage; all of the objects are on view and the space is crowded. Large items rest on the floor against the walls as there is no space to hang them and a narrow walkway winds through the room. There is no designated funding for housing the collection or for developing labels or exhibition materials. As Jill put it in her initial email, the collection is currently more like a “room full of stuff” than a museum. But they are working to rectify that.

Another difficulty the school faces is that the room is located in the middle of an operating medical training facility. The labs are used by students in programs for pathology, clinical lab specialists, as well as mortuary science. Because of the presence of bodies in the building, it is a lock-down facility and does not have the ability to open for tours on a regular basis. However, a one-day Open House is held each fall, usually in mid to late October. The Open House includes a tour of the entire school including the funerary museum, the anatomy lab, the autopsy lab, and the restorative arts room.

We were treated to a full tour of the school and even learned what it was like to have a museum in a working facility – while we were waiting for the elevator,

a gurney with a body on its way for embalming was wheeled up nearby. There were cadavers on the tables in the anatomy lab, but fully sealed in body bags. As we learned during our visit, once bodies are donated to science they are called “cadavers” not corpses. As someone who has only seen autopsies on NCIS or in movies, it was fascinating to see the lab in person. One room we visited is affectionately referred to as the “arts and crafts room” where students work with clay to create busts as part of their Restorative Arts class work. It could just as easily pass for one of the art studios in the education wing of the DIA.

The state of Michigan has always been at the forefront of the modern funeral industry and was the first state to organize a professional group, the Michigan Funeral Directors Association. Jill and her cohorts have reached out to the Association to seek funding so they can purchase software and implement a collections database. We provided them with a list of collections resources including The New Museum Registration Methods, the various museum professional organizations, and contact names for museum studies programs where they might find an intern to help complete the project. Jill also attended the “ABC’s of Collections” workshop at Central Michigan University last month. The current plan is to put in place a system to document and preserve the collection going forward, so that maintenance of the collection can continue after the students graduate later this year.

## AMM PRESENTS

# LOCALLY GROWN, COMMUNITY CREATED



*Image courtesy of the Greater Madison Convention and Visitors Bureau*

## AMM is going to Madison!

Join fellow Midwesterners in a city surrounded by lakes for the 2013 AMM Annual conference. *Locally Grown, Community Created* is scheduled for July 14-17, 2013 at the Concourse Hotel in Madison, Wisconsin.

A variety of sessions, along with great keynote speakers, social events, and wonderful colleagues await you! Conference highlights are available at the end of the newsletter and the complete preliminary program and other information is also available at [www.midwestmuseums.org](http://www.midwestmuseums.org). Special MRC events are highlighted throughout this newsletter.



## This COULD be your Museum!

The MRC's Mighty Rescue Crew is available with helping hands to assist a Madison area museum/ historical society on a one day collection related project. No place is too large or too small to host a day of volunteer work done by registrars, collections managers, curators, and other museum professionals. Past projects have included cleaning, cataloging, rehousing, labeling, and exhibit work.

### Interested??

Contact MRCrew Coordinator Elizabeth Frozena at [elizabeth\\_frozena@yahoo.com](mailto:elizabeth_frozena@yahoo.com).



## Travel to AMM on the MRC

The Midwest Registrars Committee (MRC) is offering multiple travel stipends, including the Terry Dowd, Inc. Annual Travel Stipend, for members to attend the Association of Midwest Museums annual meeting in Madison.

Applicants must be voting members of MRC and work in the Midwest region. Selection will be based on the materials submitted to the Travel Stipend Committee. Recipients are expected to attend the MRC luncheon meeting at AMM and write an article for the *MRC Courier* newsletter about a session at the meeting.

Awards are \$750.00 and can be applied to room, travel, or registration expenses. To apply, complete the application form and attach the required additional

information. The form is available online at [http://www.midwestmuseums.org/links\\_mrc.html](http://www.midwestmuseums.org/links_mrc.html).

If you have questions please contact Devon Vowles, MRC Vice Chair and Travel Stipends Coordinator at [dpvowles@comcast.net](mailto:dpvowles@comcast.net).

Application deadline is **May 3, 2013**.

# NEWS FROM ALL OVER

## Illinois

▪ Submitted by Amy Heggemeyer ▪

### **DuPage County Historical Museum, Wheaton** Exhibitions:

*Early Illinois Folk Art, 1825-1925*  
Now through September 15, 2103

Featuring both functional and decorative artwork, the lives and communities of everyday people will be explored through unique handmade objects. From coverlets and decoys to weathervanes and whirligigs, discover the tradition of folk art made and used in the 19<sup>th</sup> and early 20<sup>th</sup> centuries in Illinois.

### **Illinois Holocaust Museum and Education Center, Skokie** Awards & Recognitions:

In a ceremony on April 19, the Illinois Holocaust Museum and Education Center was recognized for achieving LEED Gold Certification as established by the U.S. Green Building Council. It is the second museum in the Chicago area to receive this certification, the first being the Field Museum in 2000.



Sterling Morton Library at the Morgan Arboretum

### **Morton Arboretum, Chicago**

#### Exhibitions:

*Tales and Treasures*

Now through December 2013

The Sterling Morton Library at the Morgan Arboretum is turning 50! To celebrate, the *Tales and Treasures* exhibit will showcase 50 rare and unique objects from the library's collections, each with a special story to tell. Engage with rarely seen objects, interactive games, and a library-wide scavenger hunt.

## Indiana

▪ Submitted by Lana Newhart-Kellen ▪

### **African/American Historical Society, Fort Wayne** News:

The African/American Historical Society has named John Aden as new Executive Director.

### **College Football Hall of Fame, South Bend** News:

City officials are looking to find a new occupant of the 58,000 square foot College Football Hall of Fame building. The National Football Foundation announced three years ago it was moving the hall to Atlanta after failing to draw the crowds expected when it moved the facility from Ohio to South Bend in 1995.

### **Association of Indiana Museums, Indianapolis** Conference: *Being Truly Open*

### **Indiana State Museum, Indianapolis**

September 8 and 9, 2013

The museum world is constantly trying to attract visitors. Fortunately, more can be done than just hanging an Open sign in the window. In 2013, the Association of Indiana Museums is delving into hospitality. The conference theme, *Being Truly Open*, explores how museums can be more inviting and accessible to the community, volunteers, persons with disabilities and more.

### **Indiana State Museum, Indianapolis**

#### Exhibitions:

*The Lincolns: Five Generations of an American Family*

Now through August 4, 2013

*The Lincolns: Five Generations of an American Family* is currently running at the Indiana State Museum. The exhibit examines Lincoln's family from his grandparents to his last direct descendant.



## **Milan '54 Hoosiers Museum, Milan** News:

Construction of the new home of the Milan '54 Hoosiers Museum began in June 2012. The first phase of construction includes remodeling the main floor of the former historical State Bank of Milan building

and the adjacent former Nichols Barbershop. The expansion will provide much needed floor space, allowing for a large display of Milan '54 memorabilia and will also feature the "Hoosiers Collection," which is the largest known collection of "Hoosiers" movie props and uniforms. The expansion will also provide space for a small theater and an expanded gift shop.

## **"The Standard in Fine Art Service"**

*Visit us on the World Wide Web at:*

**www.terrydowd.com**

### **Chicago**

2501 W. Armitage Ave.  
Chicago, IL 60647  
Voice: (773) 342-8686  
Facsimile: (773) 342-8650



### **Denver**

4120 Brighton Blvd. B-09  
Denver, CO 80216  
Voice: (303) 297-8686  
Facsimile: (303) 297-1919

***Crating ♦ Installation ♦ Rigging ♦ Consulting ♦ Storage ♦ Packing ♦ Shipping ♦ Custom Display***

## **Iowa**

▪ *Submitted by Teri Van Dorston* ▪

### **Danish Immigrant Museum, Elk Horn**

#### Exhibitions:

*Danish Modern: Design for Living*  
Now through January 5, 2014

Where can you see an Ant, an Egg, a Swan, a Peacock, and an Artichoke? In the new exhibition *Danish Modern: Design for Living!* Enjoy a celebration of the wonderful furniture designs that came out of Denmark in the 1950s and 1960s, and see why so many pieces are known by descriptive names like the Ant Chair, Peacock Chair, and Artichoke Lamp. Sit



Wooden monkey, hippo, and bear from the Danish Immigrant Museum exhibition



down on a Seven Chair (yes – we will let you sit on some of the chairs!) and see for yourself how a successful balance of form and function have kept these chairs in production for over 50 years.



Egg chair and ottoman -- part of the *Danish Modern* exhibit at the Danish Immigrant Museum

Filling both of the museum's temporary galleries, *Danish Modern* presents dozens of vintage pieces from the period, as well as examples of advertisements and marketing campaigns that helped introduce Danish design to American consumers. Danish furniture stores like Anton Dam published catalogs in English; aimed at American buyers, especially those at U.S. military bases in post-World War II Europe, the company promised to ship furniture anywhere in the world.

*Danish Modern: Design for Living* will be on view from April 6 through January 5, 2014. For more in-

formation, visit the museum online at [www.danishmuseum.org](http://www.danishmuseum.org) and follow us on Facebook!

### **Cedar Rapids Museum of Art, Cedar Rapids News:**

Welcome Registrar, Jaci Falco-Smith!

Jaci began her museum career in 2005 as a collections volunteer at the Old Capitol Museum as she studied history and museum studies at the University of Iowa. She was immediately drawn to working with collections because of her interests in preservation, detail, and organization.

After graduation, Jaci worked at the University of Iowa Museum of Natural History from 2007-2012 as the Assistant Collections Manager. While at UIMNH she learned the importance of great record keeping, how to care for delicate objects, and the community pride that comes from local museums.

Jaci came to the Cedar Rapids Museum of Art in November 2012. She is very grateful for the opportunity to work with such a meaningful collection. She is looking forward to learning more about the art, artists, and people who are friends of the CRMA. She can be reached directly at 319.366.7503 ext. 201 or [jfalco-smith@crma.org](mailto:jfalco-smith@crma.org).



**Do you have exhibitions, events, acquisitions, or other news to share?** Please let your State Representative or Tamara know! See the listing of MRC Board Members and State Representatives for contact information.

## **Michigan**

▪ Submitted by Robin Goodman ▪

**Kalamazoo Institute of Art, Kalamazoo**

### Exhibitions:

*For and Against Modern Art: The Armory Show + 100*  
June 29 through September 29, 2013

The 1913 International Exhibition of Modern Art, referred to now as simply the Armory Show, was the first major exhibition of modern art in the United States. Alongside traditional realistic art, the styles of the European avant-garde shocked many American viewers and inspired American artists. Many of the works that were controversial a century ago seem unremarkable now, but the intensity-and polarity-of the critical reception had deep ramifications in the art



Philip Leslie Hale, *Art Students*, 1913, oil on canvas on panel | Collection of the Kalamazoo Institute of Arts, Gift of Elizabeth Upjohn Mason and Lowell B. Mason, Jr., 2008.4

world. While some people reveled in the new expression, many were vociferously opposed to external ideas and offended by unfamiliar imagery. This exhibition focuses on the work and artists featured in the Armory Show with special emphasis on the Chicago venue.

Organized by the DePaul Art Museum, Chicago, with support from the Terra Foundation for American Art. The exhibition's presentation in Kalamazoo is sponsored Honigman.

### **Museum of Cultural & Natural History, Central Michigan University, Mount Pleasant News:**

MCNH received an NEH grant last February for disaster preparedness. This included sending the Collections Manager and Director to Mount Carroll, Illinois to attend the August 2012 Emergency Preparedness, Response, & Recovery course at the Campbell Center for Historic Preservation Studies. The intensive four day course was attended by museum professionals from all over the U.S., taught by two instructors from the National Archives and the College of Charleston. One of the days included a mock disaster involving waterlogged artifacts. As part of the grant, MCNH

was able to assemble much needed emergency response kits, including personal day packs for each of the staff to carry in their vehicles. This grant also enabled the Collections Manager and Director to present a workshop to MCNH staff and CMU Museum Studies Minors, which included a mock disaster of vandalism. MCNH is hoping to hold more workshops such as this in the future and for a wider audience.



Mock vandalism disaster

In March, MCNH's Collections Manager and Curator of Natural History attended an iDigBio workshop on digitizing wet collections hosted by the University of Kansas, Lawrence. The four day course included presentations on topics such as digitization workflows, geo-referencing, and databases given by representatives from institutions including Tulane Univer-

iDigBio Workshop



sity, Academy of Natural Sciences, and the University of Texas, Austin. KU also gave a behind-the-scenes tour of their natural history collections storage, which included two cryogenic tanks.



Mock water disaster at the Campbell Center



## Exhibitions (and News):

MCNH is also in the process of renovating its Main Gallery. Phase 1 is now complete, which involved tearing out a center core of static exhibit cases to create a more open and flexible space for new exhibits.



Right: Scene from  
*Journey Through the  
Jungle*

Left: Crowbars and  
hammers - a common  
sight during Summer  
2012 renovations



Phase 2 of installing new exhibits is already beginning. At the moment, the popular temporary exhibit, *Journey Through the Jungle*, which has been extended through Summer 2013, is being relocated to this space, so be sure to stop by and see all of our Rain Forest critters and habitats.

## Minnesota

▪ Submitted by Jackie Hoff ▪

**Goldstein Museum of Design**, University of Minnesota, Minneapolis and St. Paul  
Exhibitions:

*Printed Textiles: Pattern Stories*  
McNeal Hall Gallery, Saint Paul Campus  
June 15 through August 25, 2013

This exhibition will showcase printed textiles selected from GMD's collection for their exuberant design impact and their stories. These stories include printed textiles as reflections of popular culture, as evidence of humans' unending fascination with flowers, as fanciful imitations of other textile techniques, and as individual expressions of artists and designers both known and anonymous. Jean McElvain and Kathleen Campbell, GMD, exhibition curators.



*Say It with Snaps: Motivation Workers by Design, 1923-1929*

McNeal Hall Gallery, Saint Paul Campus  
September 13, 2013 through January 6, 2014

Between 1923 and 1929, Chicago-based Mather & Company created and sold colorful, graphically-dramatic posters to businesses across the United States for display in the workplace. Through these emphatic posters, workers were exhorted to get to the point when they conversed with co-workers ("Say it with snap!"), not lose their temper ("Blowing up blows up your chances"), and own up to and correct mistakes because "Repeating our mistakes ruins our records." In an era when the relationships between management and workers were changing, motivating posters were a way to shape both worker behavior and attitudes. Organized by Hagley Museum and Library, Wilmington, DE and Samuel P. Harn Museum of Art, University of Florida, Gainesville.



*Indigenously Crafted: 16th Century Ribbed Vaults in Mixteca, Mexico*

HGA Gallery, Rapson Hall, Minneapolis Campus  
August 24 through October 13, 2013

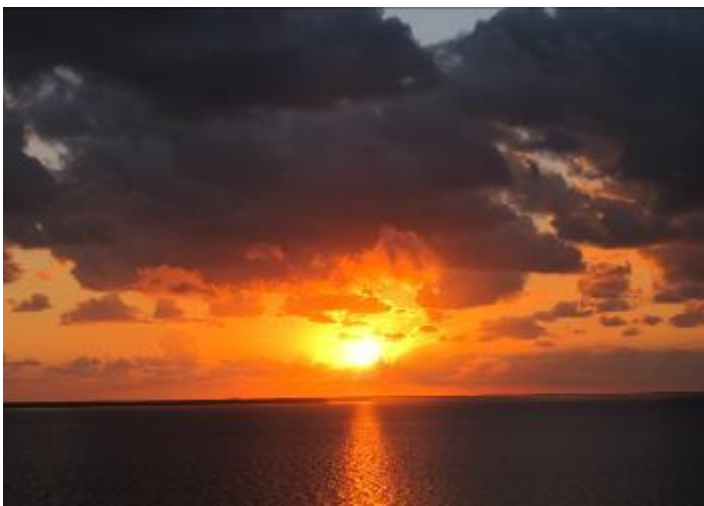


During the 16<sup>th</sup> century in Mexico, buildings of exceptional construction quality were built to accommodate thousands converting to Christianity. In a complex process of symbiosis, indigenous master builders, using the most advanced technology of their time and their deep knowledge of locally-available building materials, worked with Spanish architects who had knowledge of the architecture of the ribbed vault. Together they built three churches in Mixteca, Mexico, with geometrically-elegant vaults unique to 16th century America. This exhibition explains the complex digital modeling and other advanced technologies that enabled research on and duplication of these vaults in the late 20th century. The exhibition includes scale models of each dome. Researcher and guest exhibition curator: Benjamin Ibarra Sevilla, Assistant Professor, Architecture, CDes.

#### News:

##### Jack Lenore Larson Oral History Project

Jack Lenor Larsen is one of the most influential textile designers in the world. For 45 years he led the company founded in his name, Jack Lenor Larsen Inc., in the production of fabrics for the interior environment. In later years he produced carpet and furniture under the Larsen Carpet and Larsen Furniture names. Larsen took his design inspiration from around the world, visiting scores of countries to learn traditional hand-weaving and loom techniques which he interpreted in new and innovative ways. In 1997, Jack Lenor Larsen Inc. was purchased by the English firm Colefax and Fowler. On the occasion of this purchase, a decision was made to donate Larsen's entire archive to the University of Minnesota (Elmer L. Andersen Library Archives and Goldstein Museum of Design) and Minneapolis Institute of Arts.



A Belize sunrise

Dr. Stephanie Zollinger is an Associate Professor in the College of Design, University of Minnesota. She has long been a scholar of Jack Lenor Larsen. She was curator of the 2001 GMD exhibition *Inspiration*



Larsen and Zollinger

*of an Inovator: Jack Lenor Larsen* and co-author of the catalog *Interplay: Perspectives on the Design Legacy of Jack Lenor Larsen*. To help preserve the Larsen legacy, Dr. Zollinger interviewed many of Larsen's former designers, employees and colleagues. These interviews were audiotaped and transcribed and are now an important source of information available for scholars and admirers of Jack Lenor Larsen. Interviewees include Brad Bloom, Paul Gedeohn, Helena Hernmarck, Ellie Karanauskas, Kay Marquez, David McFadden, Stephanie Rothschild, Krista Stack, Lotus Stack, Karen Tokar, and Lori Weitzner.

Funding for these oral histories was provided by a Craft Research Fund Grant from the University of North Carolina, Ashville Center for Craft, Creativity, & Design.

#### **Science Museum of Minnesota, St. Paul**

##### Exhibitions:

*Maya: Hidden Worlds Revealed*

Opening June 21, 2013

The Science Museum of Minnesota is currently putting together *Maya: Hidden Worlds Revealed*, a 15,000 square foot traveling exhibition that will have its world premiere on June 21, 2013 at SMM. The exhibition is currently slated for 3 other venues (Boston, Denver, San Diego), but more are being add-

ed as you read this. A number of SMM staff have visited Belize and Mexico, as well as museums within the United States to secure over 240 objects for this exhibition. The objects that we just helped pack in Belize arrived a week ago with their courier and we are all unpacking and working on conservation issues and mounts. Here are a few pictures from a recent visit to Belize.



Cahal Pech, Belize



Packing crates and boxes awaiting contents

### **Scott County Historical Society, Shakopee News:**

The Scott County Historical Society will undergo major renovations this summer as the museum was awarded a \$50,000 grant by the Shakopee Mdewakanton Sioux Community. The funds will be used to create an American Indian gallery, build additional collections storage and remodel the front desk and store spaces. Construction and exhibit installation will take place over the summer and fall, with a grand re-opening scheduled for early 2014.

Stay tuned for the "after" pictures!



## **MRC Annual Luncheon Meeting**

Join your fellow MRC Members during the AMM Meeting!

Tuesday, July 16th, 2013

11:45-2:00

Johnny Delmonico's



Before views of the galleries, desk and store space slated for remodel at the Scott County Historical Society

---

Knowledge, Passion, Success through Communication and Partnerships



## **The Association of Registrars and Collections Specialists (ARCS)**

**Announces the Opening of our Conference Website**

**ARCS Inaugural Conference 2013**

***October 31 – November 3, 2013***

Join us for three days of sessions, networking, and events at the  
Chicago Hilton in Chicago, Illinois

Registration Opens -- ***Friday, Feb. 15***

<<<< Check out the Discount on Registration for ARCS members >>>>

**Visit [www.arcsconference2013.org](http://www.arcsconference2013.org) to learn more!**

### **About ARCS:**

The Mission of ARCS is to represent and promote Registrars and Collections Specialists, nationally and internationally, to educate them in the professional best practices of registration and collections care, and to facilitate communication and networking.

**PLEASE GO TO OUR WEBSITE [www.ARCInfo.org](http://www.ARCInfo.org) TO DOWNLOAD  
A MEMBERSHIP APPLICATION.  
JOIN US !**

For questions about membership, email your contact info to [ARCS4all@gmail.com](mailto:ARCS4all@gmail.com), and like us on LinkedIn and Facebook at 'ARCS'.

---



## Missouri

▪ Submitted by Lacy Bettcher ▪

### **Albrecht-Kemper Museum of Art, St. Joseph** Exhibitions:

*Local Color: A Narrative of Scurvyville – The Artwork of Mark Shank*

Now through June 2, 2013

Artist Marc Shank welcomes viewers to Scurvyville, his fictional Midwestern town featuring eccentric characters and places featured in his sketches and paintings. “I’ve always gravitated toward eccentric characters and places with my artwork,” said Shank. “Scurvyville highlights the imperfections and idiosyncrasies that make life interesting by immersing the viewer in this unique setting.” Shank originally developed the concept of creating his own town in 2006, when a friend noticed he had several years’ worth of Moleskin sketchbooks filled with quirky characters that had never been used. Though he has lived in the Kansas City area for the past 14 years, his rural upbringing in Liberal, Kansas has provided him with unique insights on small town life, which brings an authenticity to the scenes and characters in his work.

Shank, a professional artist, illustrator and graphic designer works largely in acrylic and ink on canvas, as well as with silk-screens on wood. His work has been shown at locations throughout Kansas City including KC Fringe Central, the Kansas City Scion Lab at Grinders and the Open Studios on Charlotte Street. He received two Bachelor of Fine Arts degrees from the University of Kansas.

### **Missouri History Museum, St. Louis**

#### Exhibitions:

*Between Two Worlds: Veterans Journey Home*

Now through October 20, 2013

*Between Two Worlds: Veterans Journey Home* explores the struggle of 20<sup>th</sup> century soldiers to stay connected to home, to thrive while separated from their loved ones, and to eventually transition back into home life. Through firsthand stories from veterans, this exhibit examines both the changes and the continuities in the veteran experience, from World War I to the Iraq War.

This exhibit was first developed by five students from the Teens Make History Exhibitors program in conjunctions with members of Museum Staff.

### **Saint Louis Art Museum, St. Louis**

#### Exhibitions:

*Mantegna to Man Ray: Six Explorations in Prints, Drawings, and Photographs*

April 26 through October 27, 2013

*Mantegna to Man Ray* is the inaugural exhibition in the two new main floor galleries for Prints, Drawings and Photographs, which will feature rotating exhibitions from the Museum's some 14,000 works on paper. This exhibition will focus on six areas of uncommon strength and quality in the works on paper collections. Three of the exhibition's six sections revolve around a single, innovative artist – Pieter Bruegel, George Caleb Bingham, and Max Beckmann – while the others are defined by a place or a time.

Highlights include prints by Andrea Mantegna and Rembrandt van Rijn and the steel etching plate for the print after George Caleb Bingham's *County Election*. A selection of 20<sup>th</sup> century European prints, drawings, and photographs includes two large-scale pastels of dancers by Edgar Degas, and Man Ray's solarized photograph, *Iris*.

#### *Postwar German Art in the Collection*

June 29, 2013 through January 26, 2014

Drawing from the Museum's great strengths in post-war German art, this inaugural installation will occupy the special exhibition galleries of the newly opened East Building. The exhibition addresses a broad range of artistic responses in the aftermath of World War II, with themes and groupings such as the legacy of Joseph Beuys, large-scale works by Gerhard Richter, Sigmar Polke, and Anselm Kiefer, the vibrant scene of 1980s Cologne, and the influence of the Düsseldorf School of Photography. Galleries will showcase works by Georg Baselitz, Jörg Immendorff, Martin Kippenberger, Bernd and Hilla Becher, Andreas Gursky, Candida Höfer, among others. This exhibition will feature about 60 works of art, including painting, sculpture, drawings, prints and photography.

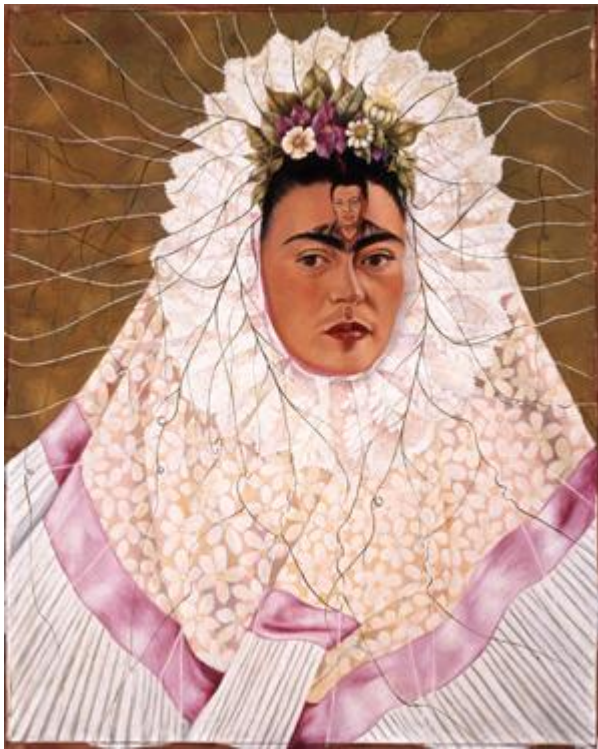
Curated by Tricia Y. Paik, assistant curator of modern and contemporary art, with Nathan Stobaugh, research assistant.

### **Nelson-Atkins Museum of Art, Kansas City**

*Frida Kahlo, Diedo Rivera and Masterpieces of Modern Mexico*

From the Jacques and Natasha Gelman Collection

June 1 through August 18, 2013



Frida Kahlo (Mexican, 1907–1954). *Diego en mi pensamiento* (*Diego on My Mind*), 1943. Oil on Masonite, 29 7/8 x 24 inches. The Jacques and Natasha Gelman Collection of 20th Century Mexican Art. The Vergel Foundation. Conaculta/INBA. © 2013 Banco de México Diego Rivera Frida Kahlo Museums Trust, Mexico, D.F. / Artists Rights Society (ARS), New York.

More than 100 paintings, sculptures, photographs and drawings by artists such as Frida Kahlo and Diego Rivera showcase the rich artistic traditions of the Mexico of yesterday and celebrate the vitality of Mexican art today. Never before seen in this region, art from the Gelman collection includes a variety of subject matter and styles that range from the figurative to the surreal, the abstract and the conceptual. Share in the passion that inspired this exceptional private collection of Mexican art.

This exhibition has been organized by The Nelson-Atkins Museum of Art with the Vergel Foundation. Support has been received from the Donald J. Hall Initiative, The Keith and Margie Weber Foundation, Belger Cartage Service, Inc., the Campbell-Calvin Fund and Elizabeth C. Bonner Charitable Trust for exhibitions and our generous donors to the Annual Fund.

### **Toy and Miniature Museum, Kansas City**

#### Exhibitions:

*Trash or Treasure? The Curious Items and Strange Artifacts of Just Colcord*

Now through June 9, 2013

Colcord explores the streets of Kansas City for discarded treasure to transform into characters with

elaborate stories—a robot or a wizard with a miniature lair. Each creation evolves from the trash of others, repurposed and reborn into a new lifecycle. For Colcord, art is an experimental process, an expression of nostalgia for his own childhood.

*Trash or Treasure?* begins with found and repurposed materials as unassuming as bottle caps and screws melded with literature and pop culture inspiration and Colcord's own imagination. From there, figures are born with definitive personalities, unique life experiences, companions, enemies, friends, and even birthdays. Colcord's figures, along with his handmade sets, star in several stop motion films included in the exhibit.

"His art is a reminder that toys are not just for kids and play is not just for childhood. Art is play. It is something evolving and organic that you engage with," said museum educator Laura Taylor. Featured in Colcord's universe of figures on exhibit are a heist team of eight headed by Mr. Fixit, a dark character outfitted with rope and suction cup to scale the museum's cases after hours.

Colcord expanded his artwork after a trip to the museum. "I had been making toys and gardens but I hadn't really made environments until I came to the Museum—then I started making the toys their own miniature museums," said Colcord.

Colcord is a self-trained artist who began creating toys out of found materials in 2011. He usually spends a year exploring a particular vein of art—his past endeavors have included a cast of puppets, handmade juggling balls, and carved wooden wands.





## Ohio

▪ Submitted by Anna Cannizzo ▪

As the newly designated Ohio representative, I don't have much to report...yet. So, I am going to take this opportunity to introduce myself. I know I have had the pleasure of meeting some of you already, but to those I am soon to get acquainted with; I am a Milwaukee native and graduated from the UW-Milwaukee Anthropology/Museum Studies graduate programs in 2007. After graduation, I was fortunate to quickly interview for the position of Curator of Collections at Denison University's newly named Denison Museum. During my interview, one question struck me, "If your classmates could describe you, what would they say?" A stream of adjectives crossed my mind, but I settled on, "That I would hope they would say I was fair, hard-working, and passionate." I was selected to the position and, afterwards, was told by search committee members that it was my passion for this vocation that set me apart and made the decision a unanimous one.

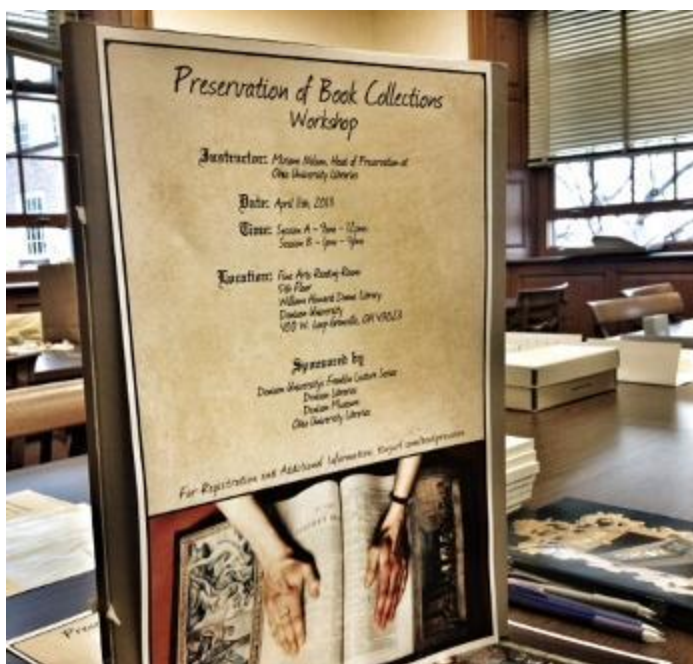
That message was heard loud and clear and has been a constant driving force in what I do, or I should say, what I LOVE to do. After seeing the membership numbers for Ohio in the last issue of Courier, I know that passion will be a useful tool as I work to build our base over the course of this year. Ohio has so many amazing cultural organizations and professionals that operate them that this makes this task exciting.

While I am not able to report on their events just yet, I can report news on my home front. I have worked very hard to build awareness regarding cultural heritage preservation at Denison. Last week, with the collaborative efforts of some local preservation professionals, we were able to offer a small workshop dedicated to book preservation. This workshop ties into our current exhibitions (on view until May 11, 2013) that all feature book art: *DRUCKWORKS: 40 Years of Books and Projects* by Johanna Drucker; *Book + Art: The Reading Room*; *Artist Books Print Project*;



*Queer Graphix Zines*. This workshop offered local professionals or those who volunteer in cultural heritage organizations practical preservation methods and would not have been possible without the participation of Miriam Nelson, Head of Preservation at Ohio University Libraries and Joshua Finnell, Humanities Liaison Librarian at Denison University's Doane Library. We at Denison are conspiring to offer more of these types of opportunities in the future and hope to involve Ohio MRC members.

In closing, I must say that I hope to meet many of you at the AMM annual conference in Madison, WI this summer and I think the best way to end this is to say stay tuned...



## Speaking of Madison...



Mark your calendars for the  
MRC Late Night Happy Hour  
Tuesday, July 16th  
Friends, Fun and Frivolity!  
(and maybe some free stuff)





## Wisconsin

▪ *Submitted by Elizabeth Frozena* ▪

### **Chazen Museum of Art, Madison** Exhibitions:

*Michael Lucero Installation*  
May 10 through August 18



In 1979 Michael Lucero constructed a series of hanging figures from fruit crates scavenged in the East Village. These oversized, eerily abstracted figures recall childhood memories of towering wire and burlap figures Lucero encountered at Native American trading posts on family car trips along Route 66. The human figure, remains of ancient cultures, and innovative use of materials are hallmarks of his ceramic sculpture, for which he is best known. These wood works have only been exhibited once, in 1980.

*Drawings from the Joseph McCrindle Collection*  
March 16 through May 26



This exhibition reflects the breadth of a bequest from Joseph McCrindle of more than 150 English, Italian, and French drawings from the sixteenth through the twentieth century. The drawings demonstrate how each generation of artists transform the medium with their personal styles and how those styles are transformed by the next generation. Featuring works by a

wide range of artists, including Jean Léon Gérôme, Domenico Piola, Emile Bernard, Thomas Rowlandson, and Jean Cocteau, donated to the Chazen by McCrindle, founder of the Transatlantic Review magazine.

### **Kenosha Public Museum System, Kenosha** News:

The Kenosha Public Museum System is pleased to announce the hiring of Dean DeRose as our new Exhibit Builder. Mr. DeRose began in November and brings a vast amount of knowledge and talent to the position.

Also, we are now members of Travel Green Wisconsin which promotes sustainable travel in the state reducing the environmental impact of a Wisconsin vacation.

### Exhibitions:

*37th Annual National Juried Exhibition of the Transparent Watercolor Society of America*  
Kenosha Public Museum  
May 4 through August 4, 2013

*Society of Animal Artists "Art & the Animal" Touring Show*  
Kenosha Public Museum  
May 18 through June 30, 2013

*Lincoln: The Constitution and the Civil War*  
Civil War Museum  
Now through May 31, 2013

*Campaigns of '63: Gettysburg & Vicksburg*  
Civil War Museum  
June 15, 2013 through March 20, 2014

*Dinosaurs From The Hell Creek: Fossils From The Field*  
Dinosaur Discovery Museum  
Ongoing

### **Racine Art Museum, Racine** Exhibitions:

*RAM's Fourth Annual International PEEPS® Exhibition*  
March 29 through April 14, 2013

At the Racine Art Museum, an untraditional exhibition showcased fluffy, sugar-coated marshmallow PEEPS®. The



exhibition featured 110 entries showcasing the talents of over 145 artists. Visitors discovered colorful creations such as *Crème de la Peep* featuring a hand-crafted bronze PEEP, a local Racine favorite in *Kew-peeps*, and *The Man from RAM: Bruce Peepich*.



The PEEPls Choice Award goes to a crowd favorite. In all, 2,844 votes were cast by visitors to the show. The votes were spread out among the 110 entries, and Paul Madsen's *The Duck Side of the Moon* by Peep Floyd won the coveted title.

*Twenty-First Century Heirlooms*  
April 28 - September 15, 2013

The notion of an heirloom often describes objects “passed down” to family and friends. It suggests an intimate connection or, at a minimum, a relationship between something past and something present (and, hopefully, something future). This exhibition will use the work of contemporary artists to investigate heirlooms as ideas, as links between generations and communities, as concepts to modify or embellish, as techniques to master or modify, and as objects to treasure or refuse.

Featuring artists at various phases in their careers and objects crafted from a variety of different media, *Twenty-First Century Heirlooms* is a large-scale exhibition that offers a context for exploring what we value today and why. From brooches that use famous Western paintings as reference points to sculptures made of accumulations of recycled twentieth-century

pressed glass, as well as fast food containers made of silver, the work included in this show expands and challenges how we define heirlooms in the twenty-first century.

*Society for the Prevention of Unfinished Needlepoint (SPUN) Comes to Racine Art Museum*

Saturday, June 15, 2013

Details forthcoming!

Artists whose works are included: Chris Antemann, Lucrezia Bieler, Melanie Bilenker, Ashley Buchanan, Linda Cordell, Amber Cowan, Kim Cridler, Venetia Dale, Jack Earl, Michelle Erickson, Diane Falkenhagen, Susan Taylor Glasgow, Heirloom Couture/Joanne Kliejunas, Yevgeniya Kaganovich, Beth Lipman, Maggie Meister, Myra Mimlitsch-Gray, Susan Myers, emiko oye, Donna Sharrett, Christina Smith, Mary Smull, Kimberlie Tatalick, Jennifer Trask, Jonathan Wahl, and Stacey Lee Webber.

Find out more about SPUN at their website <http://www.unfinishedneedlepoint.org/>.

**Sheboygan County Historical Society & Museum,**  
Sheboygan

News:

The Sheboygan County Historical Society & Museum has hired Travis Gross as Executive Director. Travis began his new role on February 18.

Following an extensive search, Mr. Gross was chosen for his excellent managerial and leadership skills, passion for history and community, and dedication to the strong education and outreach endeavors of the Museum. This combination, along with his emphasis on teamwork to accomplish goals, appreciation of the many previous accomplishments of the Historical Society and Museum, and his vision to continue to grow the Museum and explore new ways of creating collaborative working environments and engaging local communities



made Mr. Gross the perfect individual to lead the Sheboygan County Historical Society and Museum in its mission to collect, preserve, and educate about the history of Sheboygan County.

---

# MIDWEST REGISTRARS COMMITTEE

---

**CHAIR**

Rachel Vargas, Registrar  
Broad Art Museum  
Michigan State University  
East Lansing, Michigan 48824  
517-884-0651, [vargasr@msu.edu](mailto:vargasr@msu.edu)

**VICE-CHAIR & TRAVEL STIPENDS**

Ms. Devon Pyle-Vowles, Artifact Collections Specialist  
314 Hawthorn, B  
Glencoe, IL 60022  
847-242-0495 or 847-903-7940, [dpvowles@comcast.net](mailto:dpvowles@comcast.net)

**SECRETARY**

Craig Hadley, Curator  
DePauw University  
10 W. Hanna  
Greencastle, Indiana 46135  
765-658-6556, [craighadley@depauw.edu](mailto:craighadley@depauw.edu)

**TREASURER**

Jennifer Noffze, Registrar/ Archivist  
The Children's Museum of Indianapolis  
PO Box 3000  
Indianapolis, Indiana 46206  
317-334-3722, [jenn@childrensmuseum.org](mailto:jenn@childrensmuseum.org)

**ARCHIVES**

Lauren Hancock, Assistant Registrar  
Cincinnati Museum Center  
1301 Western Avenue  
Cincinnati, Ohio 45203  
513-455-7165, [LHancock@cincymuseum.org](mailto:LHancock@cincymuseum.org)

**DEVELOPMENT**

Ann Sinfield, Registrar  
Chazen Museum of Art  
University of Wisconsin-Madison  
800 University Avenue  
Madison, Wisconsin 53706  
608-263-3722, [asinfield@chazen.wisc.edu](mailto:asinfield@chazen.wisc.edu)

**NOMINATIONS**

Cristin Waterbury, Curator  
National Mississippi River Museum & Aquarium  
350 East Third Street  
Dubuque, Iowa 52001  
563-557-9545, [cwaterbury@rivermuseum.com](mailto:cwaterbury@rivermuseum.com)

**NEWSLETTER**

Tamara R. Lange, Collection Coordinator/Registrar  
Sheboygan County Historical Society & Museum  
3110 Erie Avenue  
Sheboygan, Wisconsin 53081  
920-458-1103, [tamara.lange@sheboygancounty.com](mailto:tamara.lange@sheboygancounty.com)

**ILLINOIS**

Amy P. Heggemeyer, Asst. Registrar for Acquisitions  
The Spurlock Museum  
University of Illinois at Urbana-Champaign  
Urbana, Illinois 61801  
217-265-0472, [heggemey@illinois.edu](mailto:heggemey@illinois.edu)

**INDIANA**

Lana Newhart-Kellen, Registrar  
Conner Prairie  
13400 Allisonville Road  
Fishers, Indiana 46038-4499  
317-776-6000, [newhart@connerprairie.org](mailto:newhart@connerprairie.org)

**IOWA**

Teri Van Dorston, Assistant Director  
Veterans Memorial Commission  
50 2nd Avenue Bridge  
Cedar Rapids, Iowa 52401  
319-286-5038, [T.VanDorston@cedar-rapids.org](mailto:T.VanDorston@cedar-rapids.org)

**MICHIGAN**

Robin Goodman, Registrar  
Kalamazoo Institute of Arts  
314 South Park Street  
Kalamazoo, Michigan 49007  
269-585-9271, [robing@kiarts.org](mailto:robing@kiarts.org)

**MINNESOTA**

Jackie Hoff, Director, Collection Services  
Science Museum of Minnesota  
120 West Kellogg Blvd.  
St. Paul, Minnesota 55102  
651-221-9435, [jhoff@smm.org](mailto:jhoff@smm.org)

**MISSOURI**

Lacy Bettcher, Museum Cataloger  
Toy & Miniature Museum of Kansas City  
5235 Oak Street  
Kansas City, Missouri 64112  
563-542-1401, [lacy.bettcher@gmail.com](mailto:lacy.bettcher@gmail.com)

**OHIO**

Anna Cannizzo, Curator of Collections  
Denison Museum  
P.O. Box 810  
Granville, OH 43023  
740-587-6554, [cannizzo@denison.edu](mailto:cannizzo@denison.edu)

**WISCONSIN**

Elizabeth Frozena, Registrar  
Racine Art Museum  
441 Main Street  
Racine, WI 53401-0187  
262-638-8300, x113, [efrozena@ramart.org](mailto:efrozena@ramart.org)

---





The Midwest Registrars Committee formed in 1978 to provide a forum for the exchange of information and methods among museum collections professionals and registrars in the Midwest region. The MRC fulfills this objective by promoting an atmosphere of mutual aid and cooperation and by promoting professional practices to benefit colleagues, the museum community, and members.

The MRC is affiliated with the Registrars Committee of the American Association of Museums (RC-AAM) and the Association of Midwest Museums (AMM).

#### Who can join?

Voting membership in the Midwest Registrars Committee is open to those museum personnel who support the objectives of the MRC and who reside in the Midwest region, including:

- Illinois
- Indiana
- Iowa
- Michigan
- Minnesota
- Missouri
- Ohio
- Wisconsin

You don't have to be a registrar! Collections managers, curators, volunteers, administrators, conservators, corporate registrars, students, or other collections care professionals are encouraged to join.

A non-voting membership is available for individuals who are associated with for-profit organizations such as shipping companies, customs brokers, insurance firms, and other suppliers of materials and services, and individuals who reside outside of the Midwest region.

#### Benefits of membership

- The Courier, MRC's quarterly newsletter
- Funding assistance for state workshops
- Professional network
- Workshops
- Travel stipends to attend AMM Conference
- Membership directory

#### Membership fees

- Annual dues are \$10.00 per year
- The membership period covers the calendar year (January 1 - December 31)
- Make checks payable to:  
Midwest Registrars Committee

#### Membership form (can type and save text)

Date: \_\_\_\_\_  
 Name: \_\_\_\_\_  
 Position: \_\_\_\_\_  
 Institution: \_\_\_\_\_  
 Address: \_\_\_\_\_  
 City/State/Zip: \_\_\_\_\_  
 Phone/fax: \_\_\_\_\_  
 Email: \_\_\_\_\_

- ☐ New (voting \$10)  
☐ Renewal (voting \$10)  
☐ New (non-voting \$10)  
☐ Renewal (non-voting \$10)

#### Make a difference!

Your active participation ensures the ongoing success of the MRC programs and activities. Please check the areas in which you would like to get involved:

- ☐ State representative  
☐ Newsletter  
☐ Programs/annual meeting  
☐ Fundraising  
☐ Membership

#### NEW FOR 2013—Renew and pay online!

Follow these two steps to renew your membership electronically:

1. Simply fill out this PDF form and e-mail it to [jenn@childrensmuseum.org](mailto:jenn@childrensmuseum.org)
2. To pay for your MRC dues via PayPal, login to your account, click "Send Money", and send your dues to: [jenn@childrensmuseum.org](mailto:jenn@childrensmuseum.org)

#### -OR-

Send paper application and payment to:  
 Jennifer Noffze  
 MRC Treasurer  
 The Children's Museum of Indianapolis  
 P.O. Box 3000  
 Indianapolis, IN 46206

## 2013 Conference Sessions

### Museum Management Sessions

In recognition of the continuing challenges of securing funds for programs and operations and finances, AMM has developed a special management track with sessions on fundraising and finances. Sessions will include:

#### FINANCE

- A4 – The Bottom Line: Understanding nonprofit Financials
- B2 – Budget Basics: Creating and Managing Your Department's Budget
- G1 – Future Think

#### FUNDRAISING

- W1 - Case Writing 101
- D2 – Fundraising in Turbulent Times
- E4 – So the Capital Campaign is Over...But Fundraising Must Go On!
- F5 – Trends in Fundraising
- G1 – Future Think

### Education Sessions

- A3 – Reimagining an Educational Loan Program for the 21st Century
- A5 – App, App, and Away with Productive Partnerships
- B3 – Science Teaching Network: Embracing Change and Fostering Sustainability
- B5 – Locally Grown, Internationally Known: Showcasing Community Voices in Mobile Content
- C2 – Changing Times, New Collaborations
- D3 – SPARK! Cultural Community Engagement for People with Memory Loss
- D4 – Evolution 101: Investigating How Education Programs are Designed, Repurposed, and Evolved
- D5 – The Living Laboratory
- D6 – Local Partnerships Building Communities
- F2 – Enriching the Lives of Early Learners Through Science, Technology, Engineering and Math
- F6 – A Bright Future: Creating a New Generation of Committed Patrons
- G4 – Nature Net: A Collaborative Environmental Education Network

### Collections Sessions

- A1 – What's in a Name? Cataloging Using Nomenclature 3.0
- B1 – Locally Grown, Federally Regulated: How Small Local Museums Can Leverage State and Federal Guidelines to Benefit Their Collections
- C1 – The Right Tool for Job: Selecting a Collections Management System that Works for You
- D1 – Disaster Response Plans: Today's Issues
- E1 – Reap Benefits: Grow Community Interaction through Shared Collection Databases
- F1 – With Orders to Identify, Clarify and Classify: Collections Metadata in the Trenches
- F4 – Telling the Story of the Civil War through Seven Local Collections: A Collaborative Project

### Technology Sessions

- A5 – App, App, and Away with Productive Partnerships
- B5 – Locally Grown, Internationally Known: Showcasing Community Voices in Mobile Content
- C4 – Trends in Technology: The Digital Road Ahead
- F3 – There's an App for That
- G2 – Mobile Tours and Portable Content